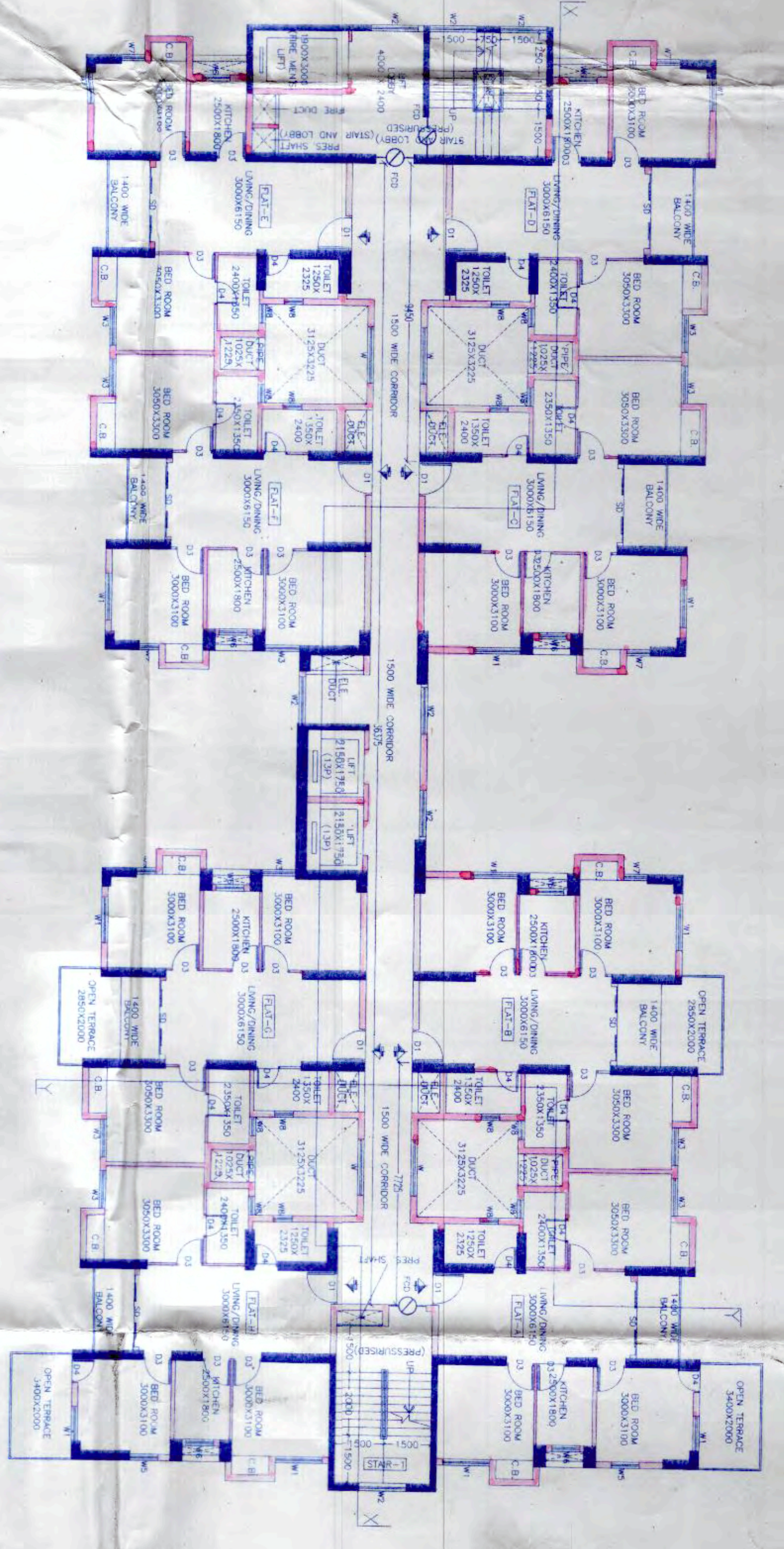
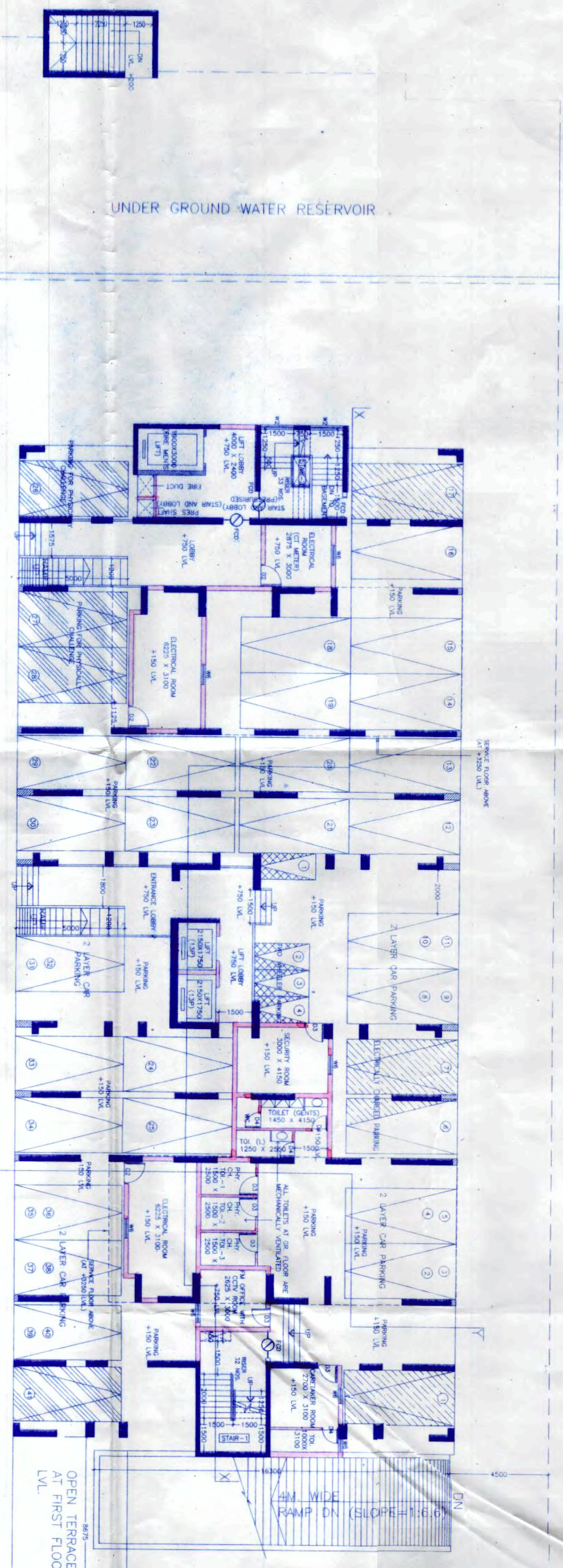


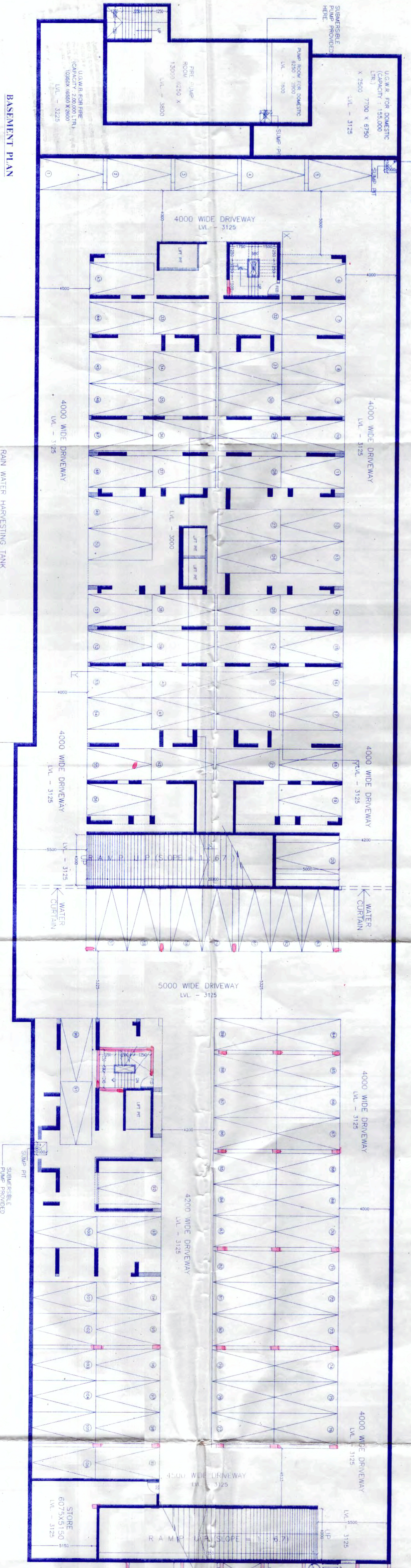
1ST FLOOR PLAN (Block 2)



2nd, 3rd, 4th, 5th, 6th, 7th, 8th, 9th, 10th, 11th, 12th, 13th, 14th, 15th, 16th, 17th, 18th, 19th, 20th, 21st, 22nd, 23rd, 24th, 25th, 26th, 27th, 28th, 29th, 30th, 31st, 32nd, 33rd, 34th, 35th, 36th, 37th, 38th, 39th, 40th, 41st, 42nd, 43rd, 44th, 45th, 46th, 47th, 48th, 49th, 50th, 51st, 52nd, 53rd, 54th, 55th, 56th, 57th, 58th, 59th, 60th, 61st, 62nd, 63rd, 64th, 65th, 66th, 67th, 68th, 69th, 70th, 71st, 72nd, 73rd, 74th, 75th, 76th, 77th, 78th, 79th, 80th, 81st, 82nd, 83rd, 84th, 85th, 86th, 87th, 88th, 89th, 90th, 91st, 92nd, 93rd, 94th, 95th, 96th, 97th, 98th, 99th, 100th FLOOR PLAN (BLOCK 2)



GROUND FLOOR PLAN (Block 2)



BASEMENT PLAN

DOORS AND WINDOW SCHEDULE

NO.	DESCRIPTION	QTY	UNIT	REMARKS
01	WOODEN DOOR	100	NO.	
02	ALUMINIUM WINDOW	200	NO.	
03	ALUMINIUM WINDOW	150	NO.	
04	ALUMINIUM WINDOW	100	NO.	
05	ALUMINIUM WINDOW	50	NO.	
06	ALUMINIUM WINDOW	20	NO.	
07	ALUMINIUM WINDOW	10	NO.	
08	ALUMINIUM WINDOW	5	NO.	
09	ALUMINIUM WINDOW	2	NO.	
10	ALUMINIUM WINDOW	1	NO.	
11	ALUMINIUM WINDOW	1	NO.	
12	ALUMINIUM WINDOW	1	NO.	
13	ALUMINIUM WINDOW	1	NO.	
14	ALUMINIUM WINDOW	1	NO.	
15	ALUMINIUM WINDOW	1	NO.	
16	ALUMINIUM WINDOW	1	NO.	
17	ALUMINIUM WINDOW	1	NO.	
18	ALUMINIUM WINDOW	1	NO.	
19	ALUMINIUM WINDOW	1	NO.	
20	ALUMINIUM WINDOW	1	NO.	
21	ALUMINIUM WINDOW	1	NO.	
22	ALUMINIUM WINDOW	1	NO.	
23	ALUMINIUM WINDOW	1	NO.	
24	ALUMINIUM WINDOW	1	NO.	
25	ALUMINIUM WINDOW	1	NO.	
26	ALUMINIUM WINDOW	1	NO.	
27	ALUMINIUM WINDOW	1	NO.	
28	ALUMINIUM WINDOW	1	NO.	
29	ALUMINIUM WINDOW	1	NO.	
30	ALUMINIUM WINDOW	1	NO.	
31	ALUMINIUM WINDOW	1	NO.	
32	ALUMINIUM WINDOW	1	NO.	
33	ALUMINIUM WINDOW	1	NO.	
34	ALUMINIUM WINDOW	1	NO.	
35	ALUMINIUM WINDOW	1	NO.	
36	ALUMINIUM WINDOW	1	NO.	
37	ALUMINIUM WINDOW	1	NO.	
38	ALUMINIUM WINDOW	1	NO.	
39	ALUMINIUM WINDOW	1	NO.	
40	ALUMINIUM WINDOW	1	NO.	
41	ALUMINIUM WINDOW	1	NO.	
42	ALUMINIUM WINDOW	1	NO.	
43	ALUMINIUM WINDOW	1	NO.	
44	ALUMINIUM WINDOW	1	NO.	
45	ALUMINIUM WINDOW	1	NO.	
46	ALUMINIUM WINDOW	1	NO.	
47	ALUMINIUM WINDOW	1	NO.	
48	ALUMINIUM WINDOW	1	NO.	
49	ALUMINIUM WINDOW	1	NO.	
50	ALUMINIUM WINDOW	1	NO.	

APPROVED
 23/10/2024
 Subir Kumar Basu
 Director of Architecture
 Sonarpur Municipality

Checked by
 Subir Kumar Basu
 Director of Architecture
 Sonarpur Municipality

Architect
 Subir Kumar Basu
 Director of Architecture
 Sonarpur Municipality

Structural Engineer
 Subir Kumar Basu
 Director of Architecture
 Sonarpur Municipality

MEP Engineer
 Subir Kumar Basu
 Director of Architecture
 Sonarpur Municipality

Electrical Engineer
 Subir Kumar Basu
 Director of Architecture
 Sonarpur Municipality

Sanitary Engineer
 Subir Kumar Basu
 Director of Architecture
 Sonarpur Municipality

Water Supply Engineer
 Subir Kumar Basu
 Director of Architecture
 Sonarpur Municipality

APPROVED
 23/10/2024
 Sonarpur Municipality

Building of building materials on the site of the building shall be in accordance with the specifications and standards of the building materials on the site.

The building shall be constructed in accordance with the specifications and standards of the building materials on the site. The building shall be constructed in accordance with the specifications and standards of the building materials on the site.

The building shall be constructed in accordance with the specifications and standards of the building materials on the site. The building shall be constructed in accordance with the specifications and standards of the building materials on the site.

ВСТУП
Спецификация
ВСТУП



Спецификация
Спецификация
Спецификация

Спецификация
Спецификация
Спецификация

№ п/п	Наименование	Единица измерения	Количество
1	Бетон	м ³	1000
2	Железобетон	м ³	500
3	Кирпич	тыс. шт.	200
4	Цемент	т	100
5	Песок	м ³	2000
6	Гравий	м ³	1000
7	Арматура	т	50
8	Сталь	т	100
9	Дерево	м ³	100
10	Керамзит	м ³	500
11	Стекло	м ²	1000
12	Плиты	м ²	500
13	Панели	м ²	1000
14	Кровля	м ²	1000
15	Итого		

